

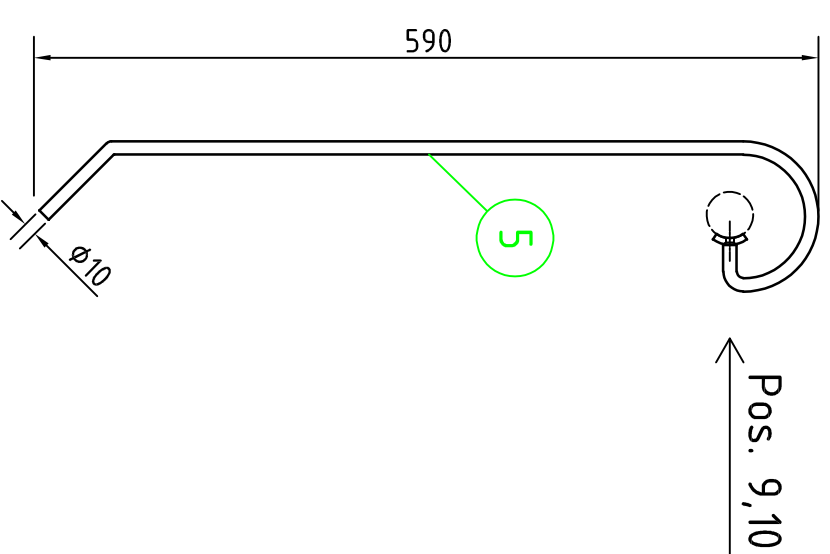
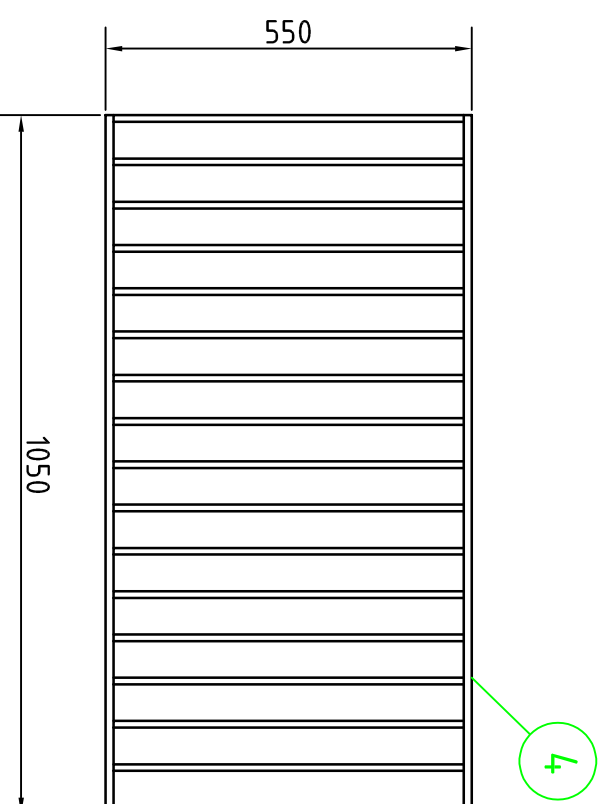
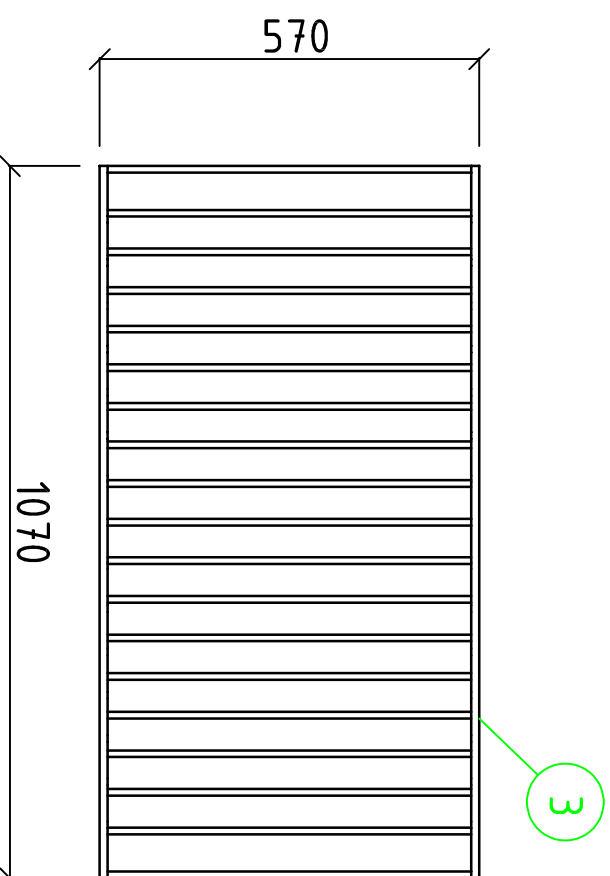
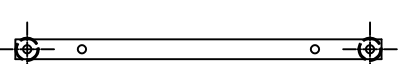
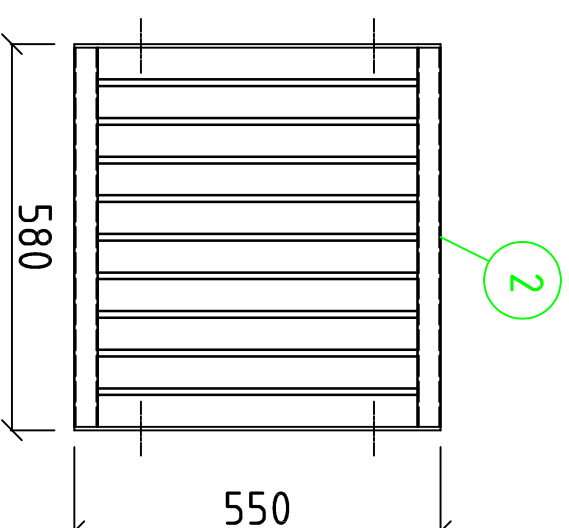
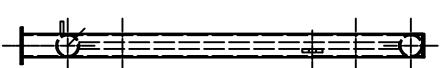
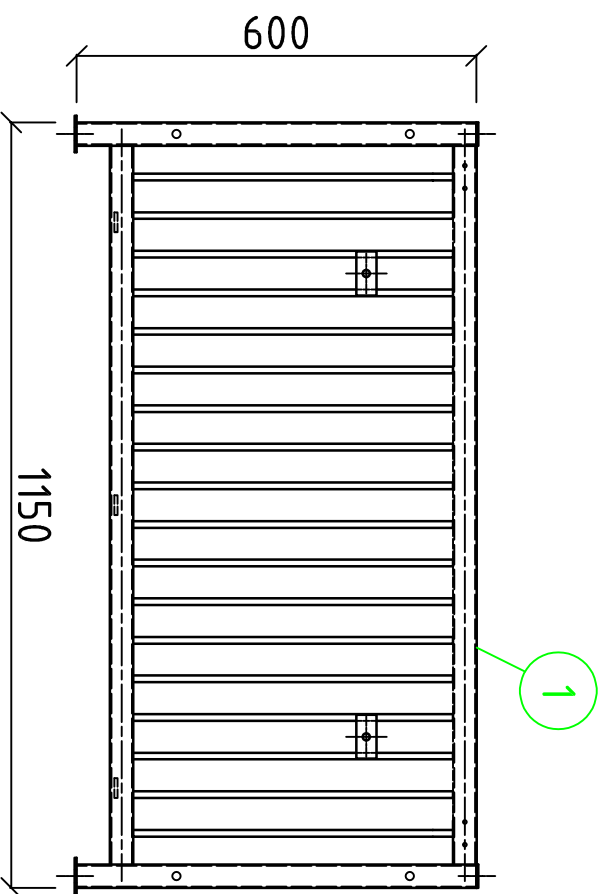
Pos. 6,7,8

Pos. 6,7,8

Pos. 9+10

Bodenheuraufe

Kunden-Nr	
Auftrag-Nr	
Blatt	2/2



Pos.	Stck.	Bezeichnung	Maße in mm
1	2	Vorder- und Hinterteil	1150x600
2	2	Seitenteil	580x550
3	1	Einlegeboden	1070x570
4	1	Gitterdeckel	1050x550
5	2	Führungsbügel	590
6	8	Schloßschraube M110x50	
7	8	Hutmutter M10	
8	8	Unterlegscheibe M10	
9	4	Senkkopfschraube M5x45	
10	4	Sicherungsmutter M5	
11	2	Wirbelschnappschäkel	

Bodenheuraufe

Kunden-Nr

Auftrag-Nr

Blatt

1/2